

# Craven Pothole Club - Gaping Gill August 2023



## 2023 Opening Times

Friday, August 11<sup>th</sup> to Friday, August 18<sup>th</sup> inclusive. First descents from 09:00 on weekdays and 08:00 at weekends.

**Please arrive at Gaping Gill and register for a trip by 08:00 to ensure your descent.**

## Booking

We are unable to take advanced bookings. Book a descent as soon as you arrive at Gaping Gill by visiting the tent next to the winch.

## Minimum Age

The minimum age is 7 years (descent is at the Leader's discretion). All children must be accompanied by a responsible adult.

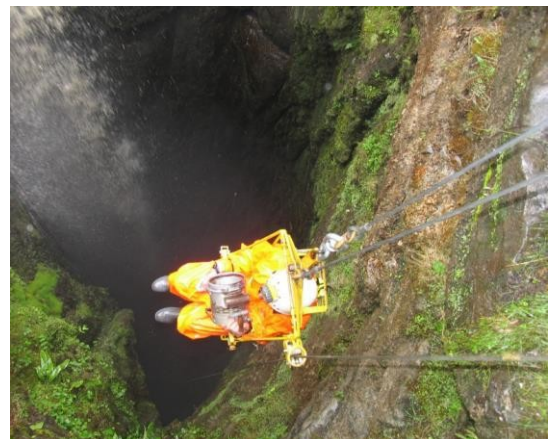
**Descent Fee:** £20 per person.

## The walk to Gaping Gill

Gaping Gill can only be reached on foot. Allow 1½ hours for the walk from Clapham village to Gaping Gill via the Estate Nature Trail and Ingleborough Show Cave. Note there are no toilet facilities once you leave the village.

## Camping

Only members of the Craven Pothole Club are permitted to camp at Gaping Gill. The Ingleborough Estate does not permit camping on the fell. If you require accommodation, there are several campsites, bunkhouses and B & B's in the Clapham area. Please visit [www.claphamyorkshire.co.uk](http://www.claphamyorkshire.co.uk) for further information.



## The Weather – will the winch be operating?

The weather is always a consideration when contemplating a visit to Gaping Gill. Although we dam the stream to divert water away from the Main Shaft, prolonged heavy rain will inevitably bring winching to a temporary halt. Even local forecasts are not always a reliable guide to predicting the weather at Gaping Gill as the area seems to have an ability to generate its own micro climate. Of course, the weather can change in the time it takes to make your journey to the Dales and walk onto the fell.

During the meet, we try to keep a number of establishments informed of our operational details. Enquire at the village store in Clapham or at Ingleborough Show Cave on the walk up. You can also get updates on [Facebook](#) and [Twitter](#). Also have a look at [www.gapinggill.org](http://www.gapinggill.org)

## What to Wear

Hopefully it will be a great day for your visit, but Gaping Gill is located on an open moor where the weather can be very different from that in Clapham village. Underground the conditions are **VERY** different from the surface - the temperature will be around 8 - 10°C (but will feel much colder due to wind and spray from the waterfalls). You **MUST** wear/bring warm, waterproof clothing. Boots/strong shoes are recommended. For their own comfort it is **PARTICULARLY** important that children are warmly dressed. **If you are wearing inadequate clothing you will not be allowed underground.** The ride on the winch takes about a minute each way and is often accompanied by spray from the nearby waterfall. During busy periods you will queue to ascend in the chair, so you'll need that warm clothing.

## Safety Helmet

We will provide a safety helmet.

# Craven Pothole Club - Gaping Gill August 2023

## Lighting

We provide subdued lighting in some areas of the Main Chamber and our guides are equipped with lights, but please bring a torch or headlamp if you wish.

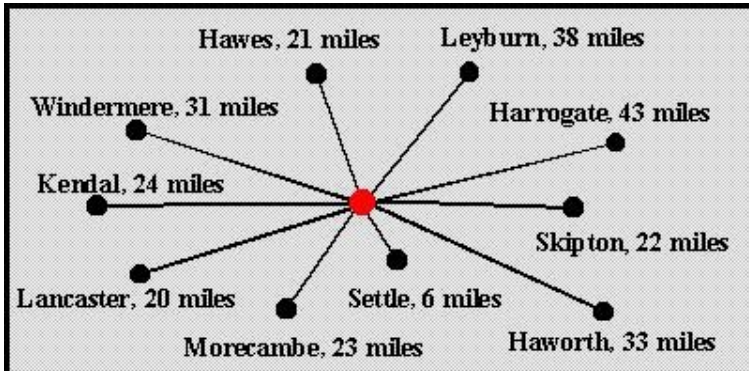
## Photography

It is well worth recording your visit for the family album and some fine pictures can be obtained using a hand-held camera with flash. The Main Chamber always contains spray from the waterfall so bring some means of protecting expensive equipment when it's not in use.

## Refreshments

There are no facilities to provide refreshments at Gaping Gill, so bring a packed lunch. There is a village store in Clapham and refreshments can be obtained during opening hours at Ingleborough show cave on your walk up.

## GETTING TO GAPING GILL



Ingleton and Lancaster.

**Gaping Gill** is situated on the lower slopes of Ingleborough Hill in the Yorkshire Dales and can only be reached on foot. The best place to start is from the village of Clapham.

By car, **Clapham** is within easy reach of many popular Yorkshire Dales and Lake District holiday destinations. The village is located just off the A65, between Settle and Ingleton.

Clapham railway station is a short walk from the village centre, providing services from Leeds, Bradford, Skipton, Carnforth and Lancaster. Local bus services provide links with Skipton, Settle,

Cars can be left in the National Park car park in the centre of the village. From the car park, take the lane following the stream up through the village to the start of the path through the Estate and Nature Trail (small admission charge).

Taking the footpath through the estate grounds and heading for the summit of Ingleborough you cannot fail to be drawn by some of the most famous sites. The source of the stream in the village soon becomes apparent, emerging from the low arch of the aptly named Beckhead Cave.

To the left, under an imposing circle of limestone is the entrance to Ingleborough Cave. The two are connected and together form the lowest accessible sections of the Gaping Gill – Ingleborough Cave system. But this is only the beginning or more accurately the end of an extensive system of galleries and caverns that reach out under the roots of Ingleborough.

To see more climb upwards through the ramparts of Trow Gill. At the foot of the gorge Ingleborough Cave passes silently beneath you and crosses under the scars of Clapham Bottoms to the right.

On reaching the fell wall, the obvious rocky hole fringed with several small trees to the left of the path is Bar Pot, one of the dry upper entrances of the system. A little way ahead a mature stream, Fell Beck, terminates abruptly in a shallow blind valley and plunges 340 feet into the limestone forming Britain's highest and most spectacular waterfall at Gaping Gill (NGR SD751727) as it begins its long underground journey to emerge at Ingleborough Cave.

